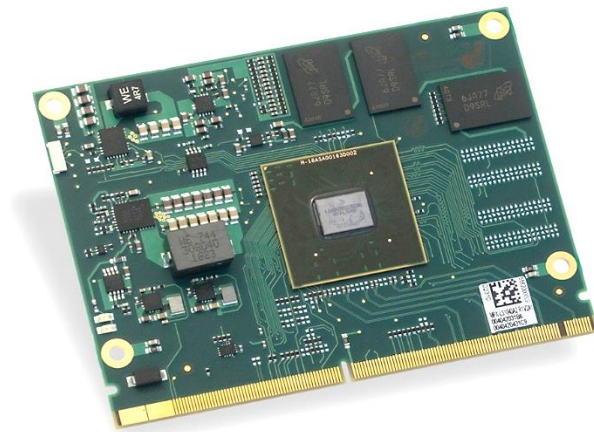


miriac[®] MPX-LS1043A

based on NXP QorIQ LS1043A CPU

Product Description

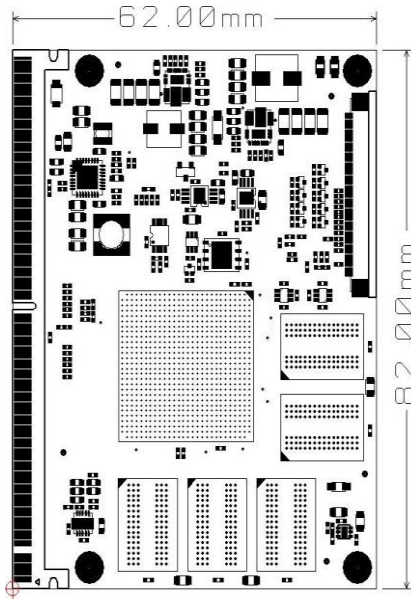


miriac MPX-LS1043A System on Module

Feature Overview

- NXP QorIQ LS1043A CPU: 4 ARM[®] Cortex[®] A53 64-bit cores at up to 1.6 GHz core frequency
- new cost effective MPX-2 System on Module form factor, connecting to a standard edge connector (MXM3.0 socket)
- up to 4 GB 32 Bit DDR4 ECC RAM
- up to 2GB SLC NAND Flash & up to 16 MB SPI Flash
- 6x Gb Ethernet
- parallel Ethernet interface: configurable as 2x RGMII
- max. 4x SerDes lanes at 10 Gb/s, configurable in different options:
 - max. 3x PCIe 2.0
 - 1x SATA 3.0 (up to 6GB/s)
 - QSGMII at 1000bps
- 3x USB 3.0
- 1x SD/eMMC
- other interfaces: 4x I²C, 2x DUART, 4x SPI, Timer/PWM unit, 1x JTAG (with COP support)
- temperature sensor

- All on board supply voltages are monitored by a separate μ -controller. Control of on board voltages and the reset logic offer a wide spectrum of custom functionality, even low level safety functions.



Software Support

- Linux,
- Microware OS-9,
- others on request

Order Number	Description	Status
855605	miriac ® MPX-LS1043A SoM, LS1043A@1.0GHz, up to 2GB 32 Bit DDR ECC RAM, up to 512MB Flash memory	available
855914	miriac ® SBC-LS1043A Development Kit for MPX-LS1043A, incl. order# 855605 (1GHz, 2GB DDR4 (32Bit), 512 MB Flash), Carrier Board, Linux BSP, accessories	available

Fig. 1 miriac MPX-LS1043A SoM Layout

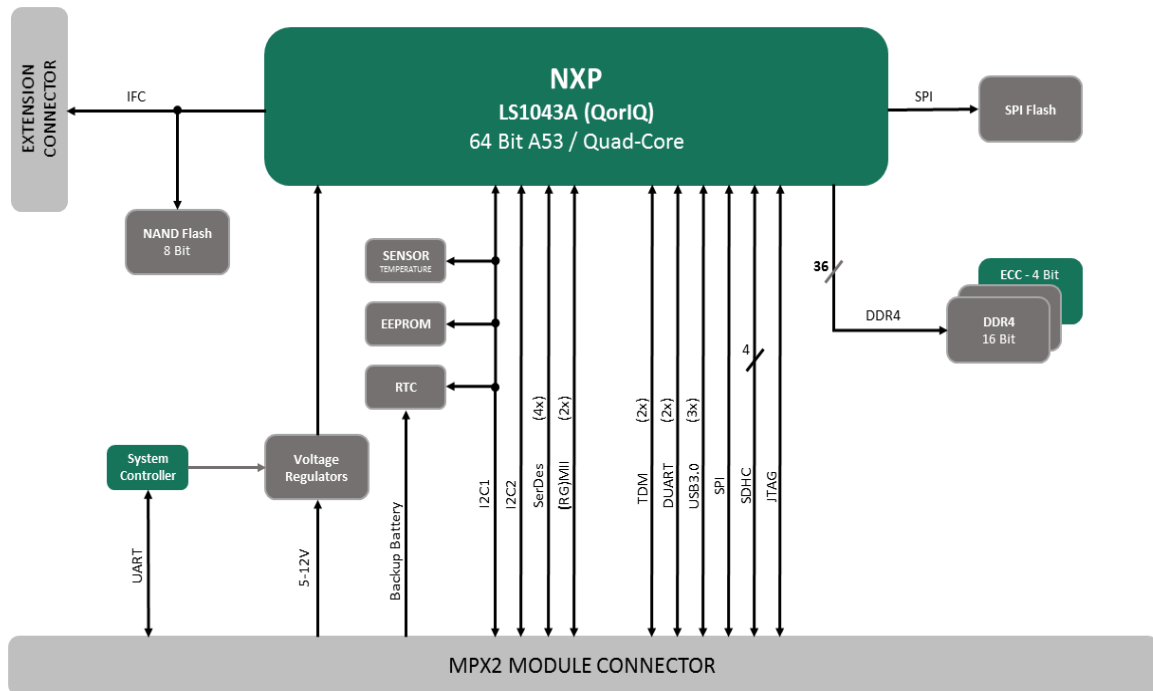


Fig. 2 miriac MPX-LS1043A Block Diagram

You are interested in more information? You are very welcome to contact us.

MicroSys Electronics GmbH
 Muehlweg 1
 82054 Sauerlach
 Germany www.microsys.de

Phone +49 (0)8104 801-0
 Hotline +49 (0)8104 801-130
 Fax +49 (0)8104 801-110
 Email info@microsys.de